

Cyberpsychology Aspects of Foreign Malign Influence

Mia M. Bloom, Ph.D. & Sophia Moskalenko, Ph.D. Georgia State University, Atlanta, Georgia

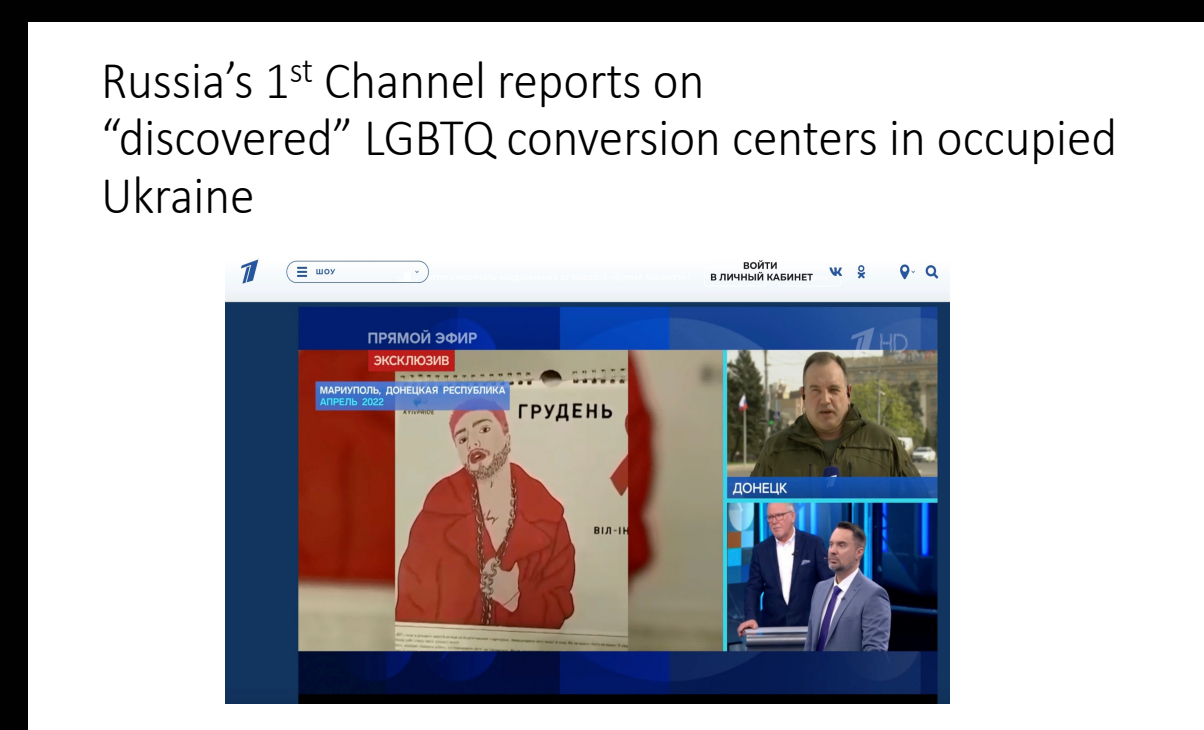
Russian-backed media claimed soldiers in occupied Mariupol (Ukraine) discovered NATO/US LGBTQ conversion center.

State TV showed the “conversion center” including materials for “grooming” children.

Russian Security Council Secretary Patrushev, “the West promotes neoliberal values where the LGBT agenda is a tool for reducing the number of ‘extra people’ who don’t fit into the notorious ‘golden billion’”

Russian state-sponsored media & Ministry of Defense alleged that the U.S. government was funding biological weapons research in Ukraine.

U.S. was training insects (like mosquitoes) to transport across the border and spread lethal diseases affecting ONLY ethnic Russians



	(1)	(2)	(3)	(4)	(5)
(1) activist intentions	1				
(2) radical intentions	.58***	1			
(3) income	.04	-.03	1		
(4) age	-.07*	-.05	-.05	1	
(5) precarious wo/manhood	.22***	.26***	-.03	.07*	1

Among Russian adults, precarious (wo)manhood correlates significantly with activist and radical intention
N=1400



Mosquito Repellent designed to protect against the gay virus engineered by NATO.

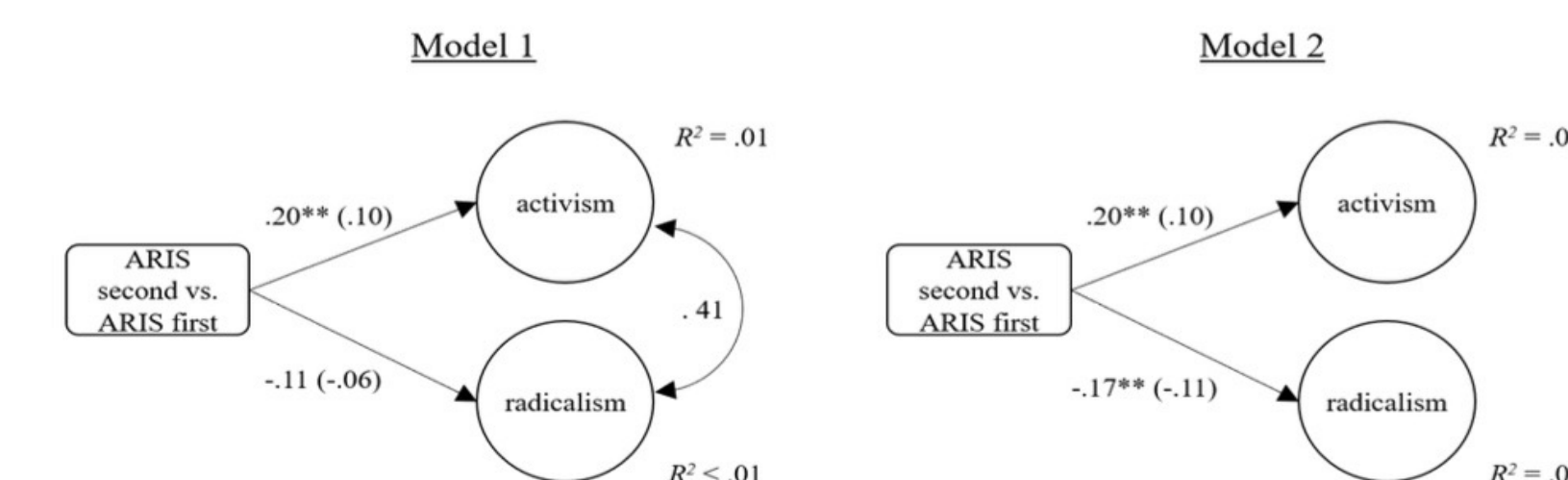
Table 3. Regression Coefficients for Models With RIS and AIS as Dependent Variables Men and Women Subsample.

Measures	RIS (men)	RIS (women)	AIS (men)	AIS (women)
Conspiracy beliefs	0.153*** (0.045)	-0.061 (0.038)	0.094* (0.047)	-0.045 (0.040)
Fragile masculinity/femininity	0.022 (0.037)	0.170*** (0.042)	0.043 (0.039)	-0.040 (0.044)
Age	-0.012*** (0.003)	-0.029*** (0.002)	-0.002 (0.003)	-0.010*** (0.002)
Education	0.008 (0.043)	-0.033 (0.039)	0.089* (0.045)	0.041 (0.041)
Ethnicity	-0.089 (0.082)	-0.118 (0.085)	-0.020 (0.085)	0.110 (0.088)
Income	-0.046 (0.024)	-0.056* (0.023)	0.033 (0.025)	0.003 (0.024)
_cons	2.448*** (0.220)	3.326*** (0.205)	2.821*** (0.229)	3.971*** (0.214)
N	887	811	887	811
R ²	.053	.221	.019	.023

Note. Conspiracy beliefs include LGBTQ contagion narratives for the men subsample and child kidnapping narratives for the women subsample. Standard errors in parentheses.
*p < .05. ***p < .001.

Exposure to Conspiracy Theories: Increases Radicalism & Decreases activism

N=1450 US adults from Prolific;
Exposed to 4 conspiracies first or ARIS measure first
Outcomes of SEM with the order of questionnaires as a predictor of activism and radicalism calculated on the matched sample (N = 858)



Note. βs are presented in parentheses. *p < .05, **p < .01.

Controlled for familiarity