

AI DEPLOYMENT LESSONS LEARNED

Missy Cummings, PhD

George Mason University





5 AI Deployment Lessons Learned

- Human errors in operation get replaced with human errors in coding
- Failure modes can be surprising
- Probabilistic estimates do not approximate judgment under uncertainty
- Maintaining AI is just as important as creating AI
- AI should be implemented with an understanding of system-level implications

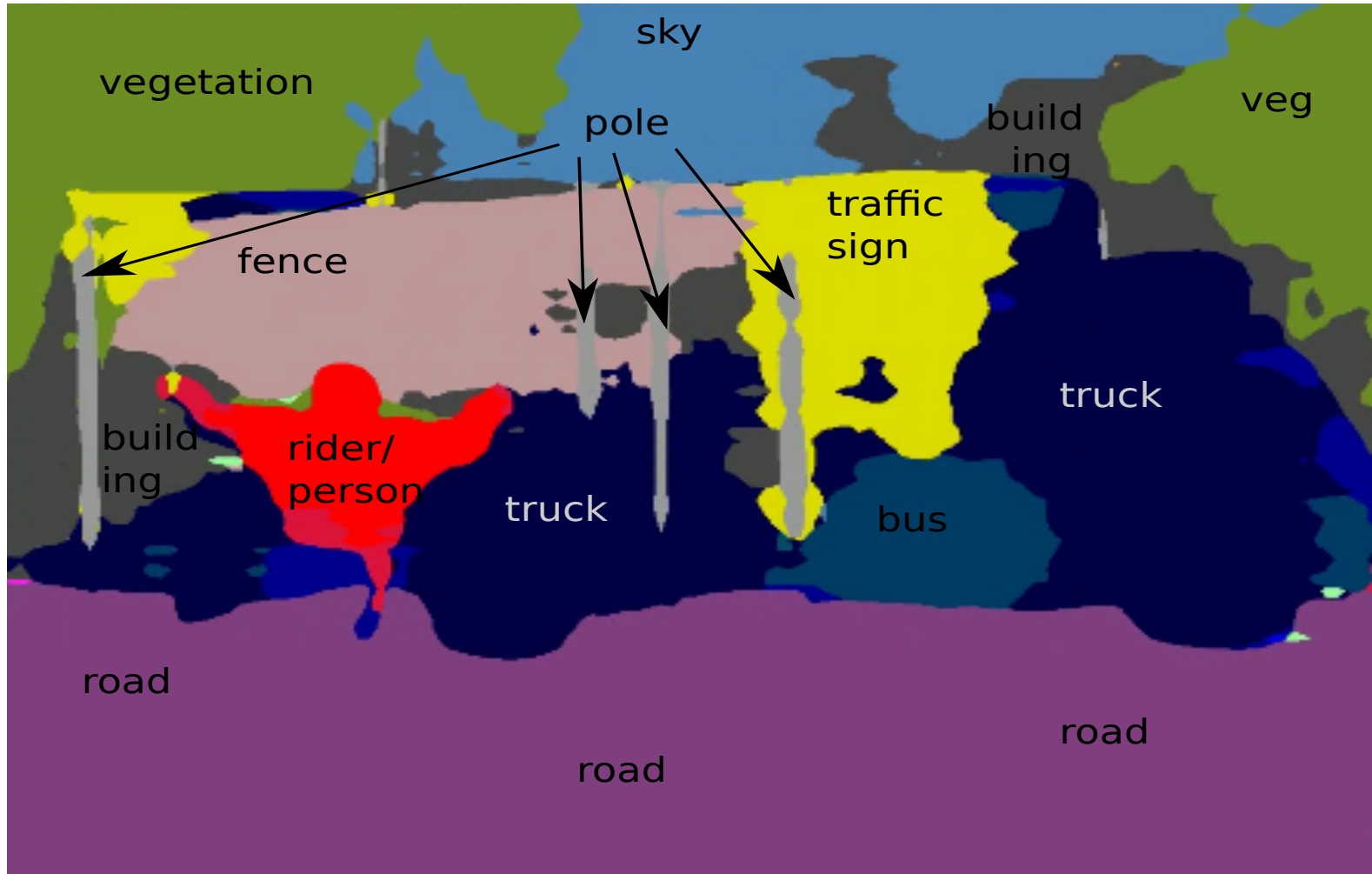
Human errors in operation get replaced with human errors in coding



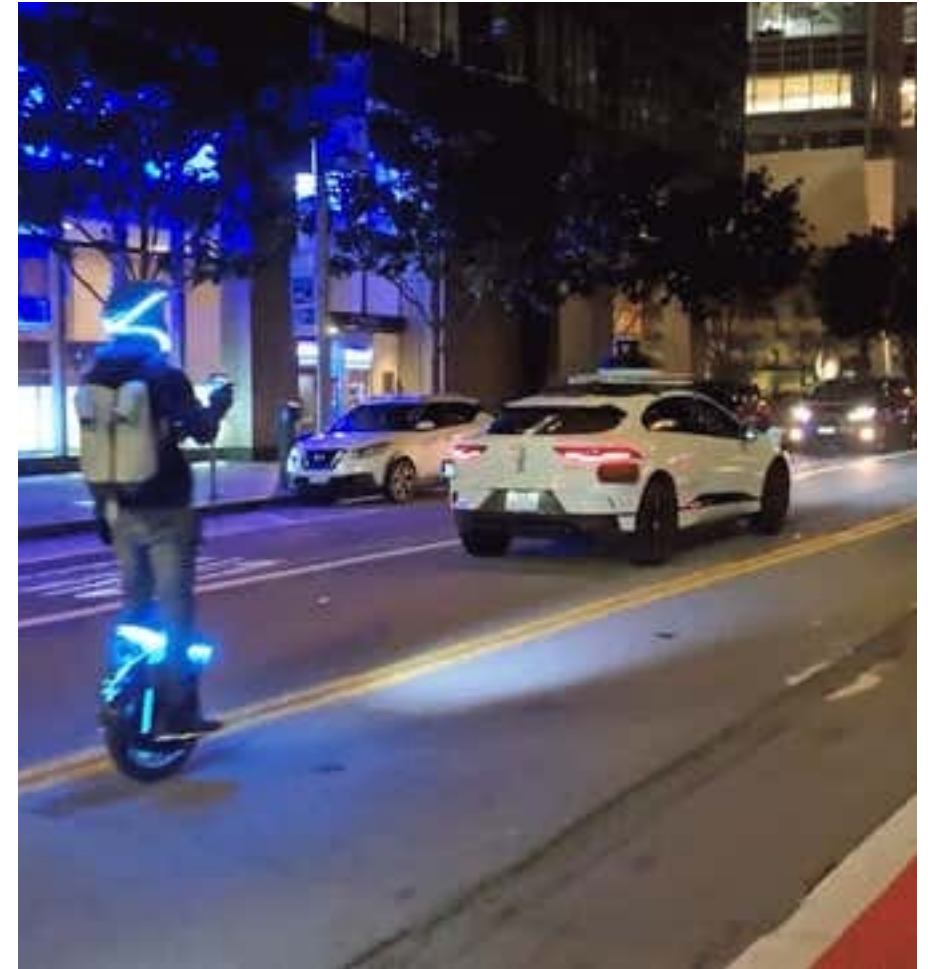
Failure modes can be surprising



AI Problems



Probabilistic estimates do not approximate judgment under uncertainty



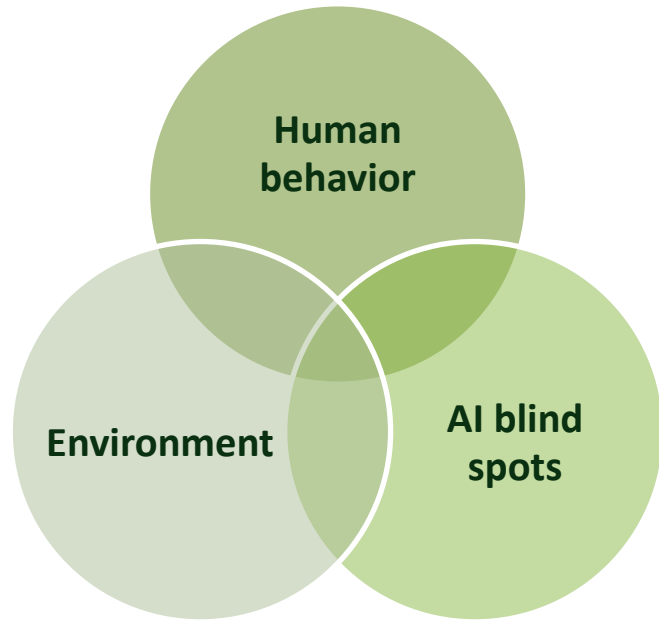
Maintaining AI is just as important as creating AI



AI should be implemented with an understanding of system-level implications



Autonomy/AI & Reasoning



Bottom-up reasoning

Skill

Rule

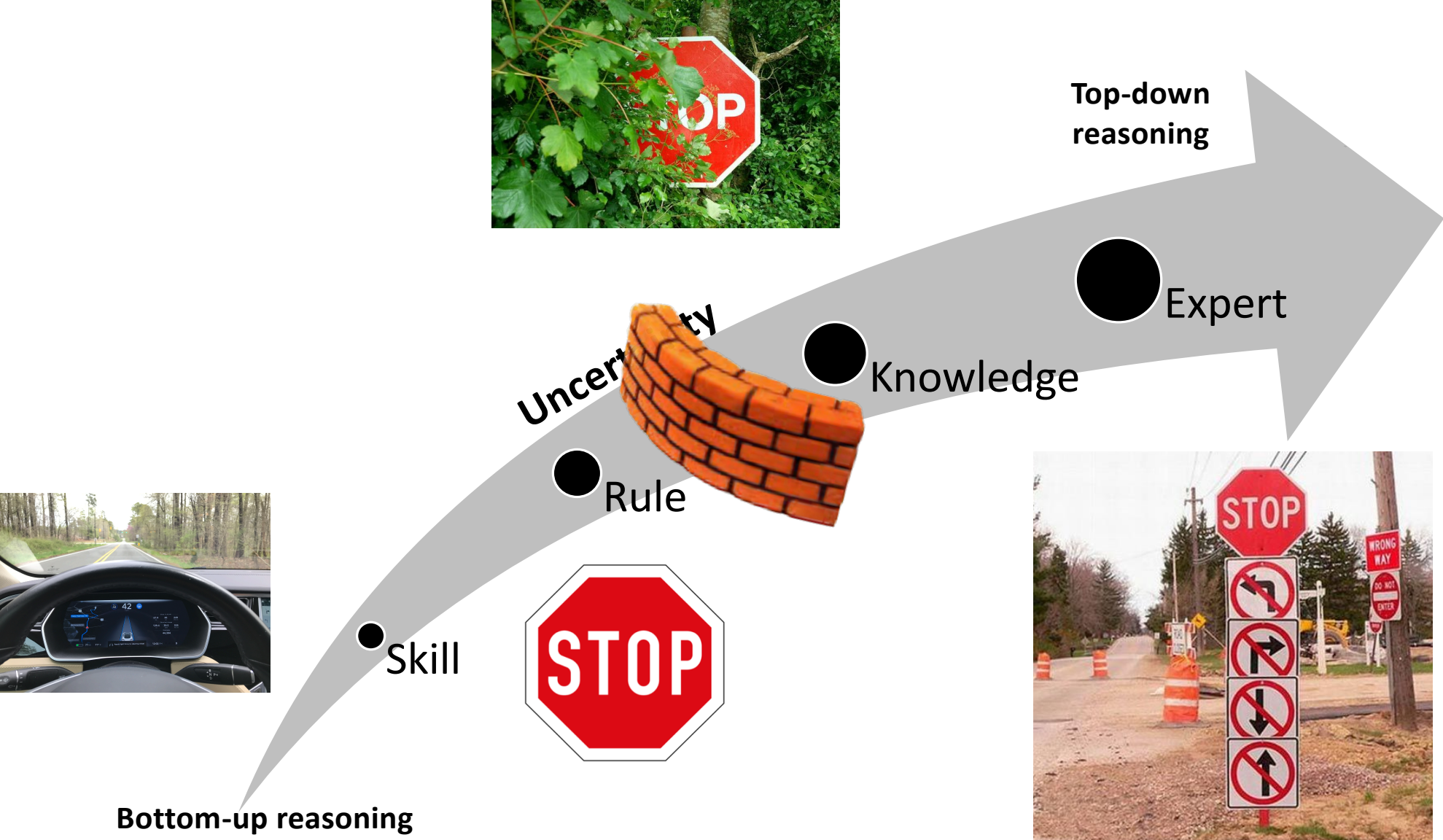
Knowledge

Expert

Top-down reasoning

Uncertainty

The Uncertainty Wall



Questions?